

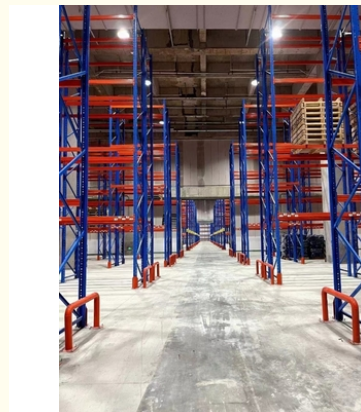


2000x1000x3000 Heavy Duty Steel Selective Pallet Rack For Industrial Warehouse

Our Product Introduction

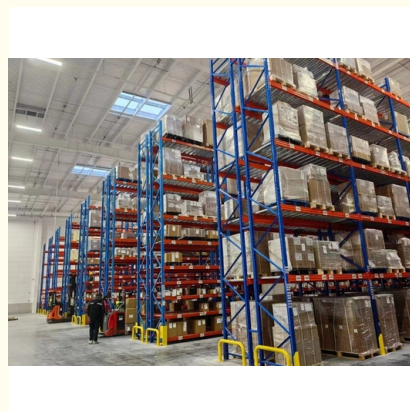
for more products please visit us on warehouse-rackings.com

Basic Information

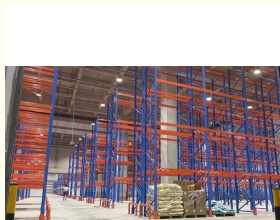


Product Specification

- Model NO.: Heavy Duty
- Material: Steel
- Structure: Rack
- Type: Pallet Racking
- Mobility: Adjustable
- Height: >15m
- Weight: 2000
- Closed: Open
- Development: New Type
- Serviceability: Common Use
- Color: Customized
- Lead Time: 25 Days
- Raw Material: Q235
- Surface Treatment: Powder Coating
- Transport Package: Standard Export



More Images



Product Description

2000*1000*3000 Heavy Duty Steel Selective Pallet Rack For Industrial Warehouse Storage

Product Description

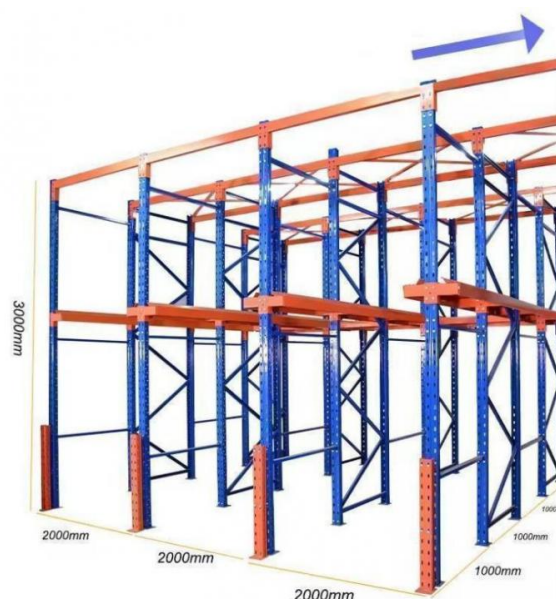
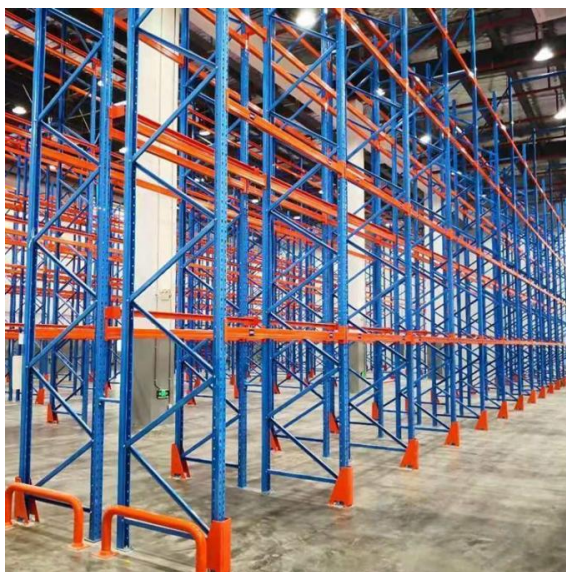
Jiangsu Qifei Intelligent Storage Equipment Co., Ltd.



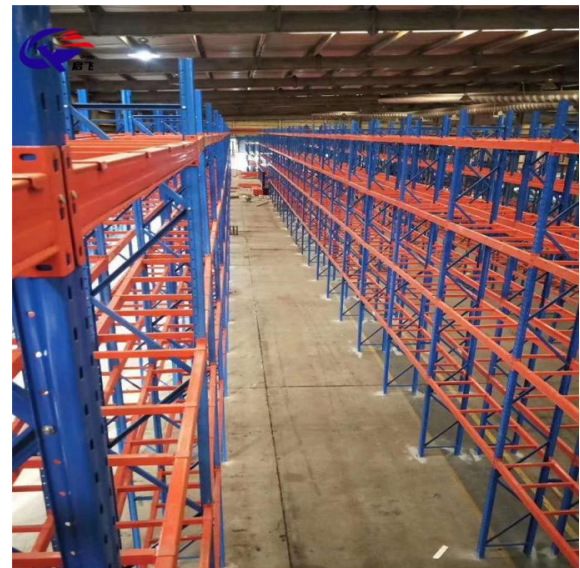
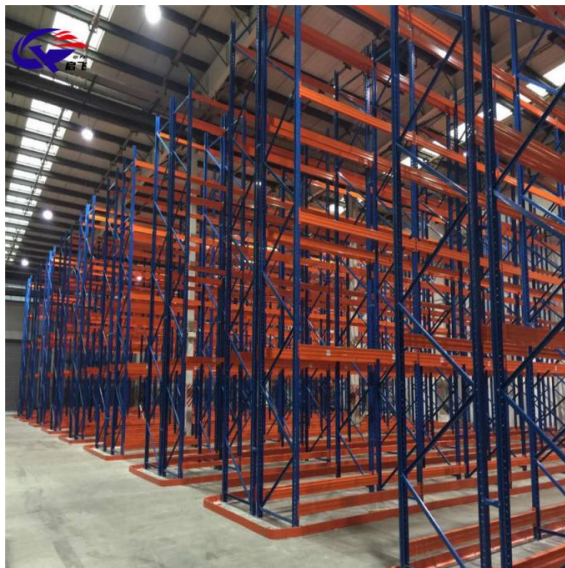
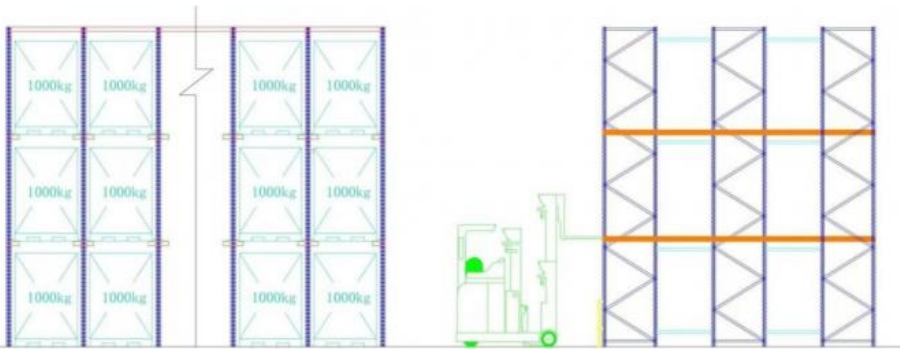
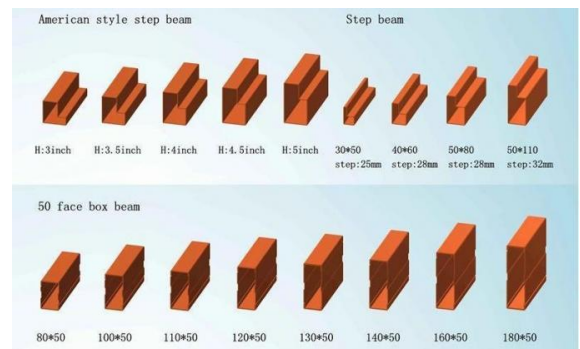
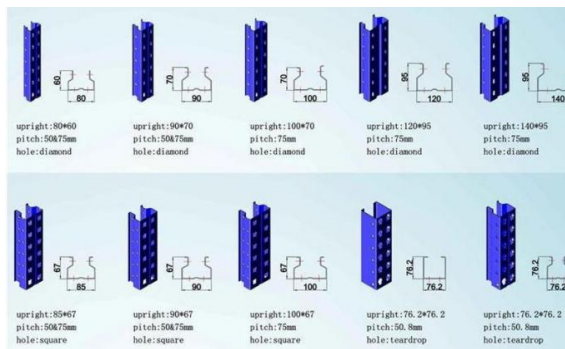
Heavy duty racking is designed for the storage of large and heavy items. The use of high-strength steel, combined with advanced structural design, ensures that the shelves remain stable and reliable when carrying large quantities of goods. Its flexible modular design makes the shelves can be freely combined and adjusted according to the actual needs of the warehouse, realizing the maximum use of space.

1. High-capacity
2. Optimized floor space
3. Engineered to meet the unique needs of many industries

Material	Q235B
OEM&ODM	Available
Surface Treatment	Galvanized/Powder Coating
Color	Customized
Sample	Available
General Use	Warehouse Shelving/Rack, etc.
Style	Warehouse Storage Pallet Rack
Selection	Single Row, back-to-back Rows and multiple Rows
Dimension	Standard Pallet:1200*800(F) / 1200*1000(F) / 1100*1100(F) / 1066(F)*1220 Depth:1000MM / 900MM / 1020MM Width: 2700MM / 2300MM / 2500MM / 2432MM Height::pitch is adjusted by increments of 75mm Customized Pallet:contact us directly
Beam	Height:80~160mm; Width:45mm/50mm; Thickness:1.5~2.5mm
Upright	80*60; 90*60; 90*70; 90*75; 100*67; 100*70; 100*75; 120*75; 120*87mm, Thickness1.5~3.0mm
Bearing Capacity	5000KG per level max ; 1500KG per pallet max



Detailed Photos



PRODUCE PROCESS



Raw Material

Cold Rolling

Rust Removal



Cutting Plate

Bending

Welding



Powder Coating

Packing

Loading Container



Company Profile

Welcome to visit our company

Jiangsu Qifei Intelligent Storage Equipment Co., Ltd



Established in 2020, is one of the leading manufacturer specialized in industrial warehouse storage equipment.



Main products are heavy/medium/light duty rack, cantilever rack, mezzanine floor, drive in rack, and so on.



We aim to provide cost-effective and space utilization storage solutions for all customers worldwide.

Certifications



Co-operation Process



Required information for quote

- 1, The AUTOCAD drawing or draft drawing of warehouse or racking.
- 2, Length, Height, and Width of the warehouse.
- 3, Layers of the racking
- 4, Pallet size.
- 5, Max weight of pallet with cargo on.
- 6, Color requirement.

Packaging & Shipping



FAQ

Q: Are you manufacturer or trading company?

A: We are experienced manufacturer in the warehouse storage industry.

Q: How is your delivery time?

A: Generally, it is within 25 days against formal order and deposit. It also depends on other factors such as order quantity.

Q: What is the payment term?

A: T/T 30% as deposit, and 70% before delivery. We'll show you the photos of the products and packages before you pay the balance.

Q: What is your terms of delivery?

A: EXW, FOB

Q: Are samples available?

A: Yes, We can supply the sample if we have ready parts in stock, but the customers have to pay the sample cost and the courier cost.

Q: What is the minimum order quantity?

A: Generally, MOQ is 10sets.

Q: Can I make my own brand and designed products?

A: Yes, we do both OEM and ODM, so you can make your own product with your own logo.

Q: Where is your factory? Can I visit it?

A: Our factory located in Nanjing, Welcome to visit our factory. We can arrange pick-up from the airport or train station for you.

Q: What parameters do I need to provide for an accurate quotation?

- 1) Quantity(set)
- 2) Size: Length*Width*Height (mm) or samples or technical drawings
- 3) Load capacity per layer(kg)
- 4) Number of layers

Q: What is the material being used for your products?

A: Mild steel Q235.

Q: I don't have drawing or picture available for the products, could you design it for me?

A: Yes, we can make the best suitable design for you but need to know more details.

Q: Do I get any guarantee from your company?

A: 3~10 years warranty

Q: How do you make our business long-term and good relationship?

A: Quality makes trust and reputation, plus competitive price to ensure our customers benefit ;

Service & Support

Technical support

Provide professional consulting services, design according to customer needs.



Equipment customization

we provide customized storage equipment design to meet customer and different application scenarios needs.



After Service

Perfect after-sales service, including equipment maintenance, spare parts supply, technical consultation and other services.



Jiangsu Qifei Intelligent Storage Equipment Co., Ltd.



+86-15161451461



sharonyan@qifeirack.com



warehouse-rackings.com

Add: #739 Dixiu Road Jiangning District Nanjing China